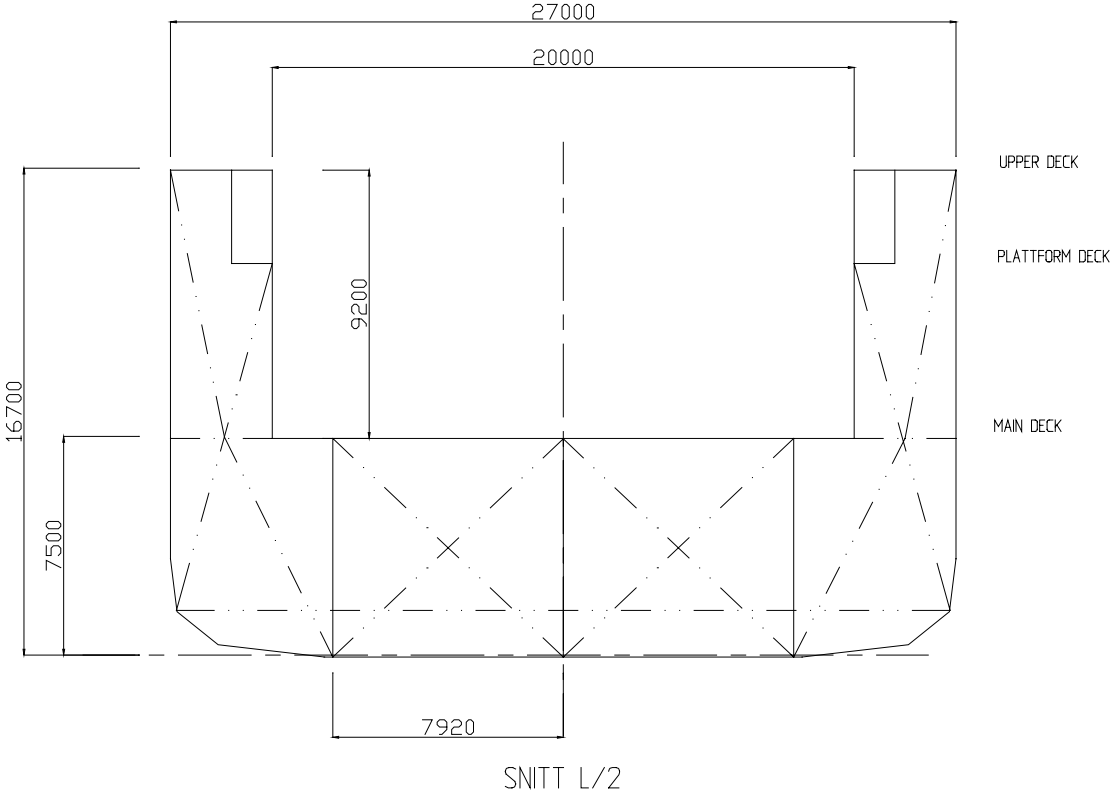


TRANSVERSE SECTION CARGO DOCK



The heavy transport vessel "Eide Transporter" have a cargo dock with 9,2 metre-high side walls, ensuring safe transport of both floating and non- floating cargo.

In the huge cargo dock, floating equipment up to 3 m draft can be accomodated. Non- floating cargo, like offshore modules, container cranes, cranes, heavy cargo, container modules etc can be loaded over the ship's stern.