



EIDE BARGE 24

TANK BARGE

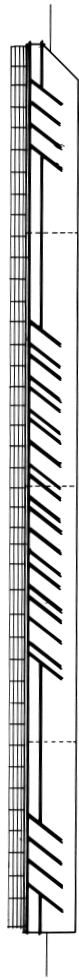
Built: 1974
Call sign:
Register tonnage: GRT NRT

DIMENSIONS:

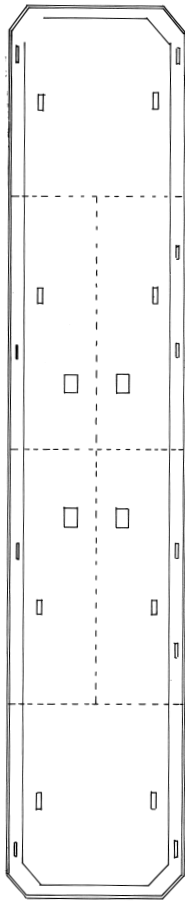
Length overall: 61,57 m
Breadth moulded: 12,19 m
Depth moulded: 3,66 m
Light draft: 0,31 m
Loaded draft: 1,81 m

CAPACITIES:

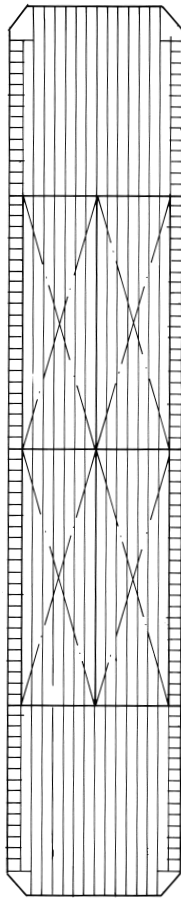
Deadweight: 1117 tons
Tankcapacities:
Port aft tank: 339 m³
Starboard aft tank: 339 m³
Port forward tank: 339 m³
Starboard forward tank: 339 m³
Total: 1358 m³



PROFILE



DECK PLAN



TANK BOTTOM